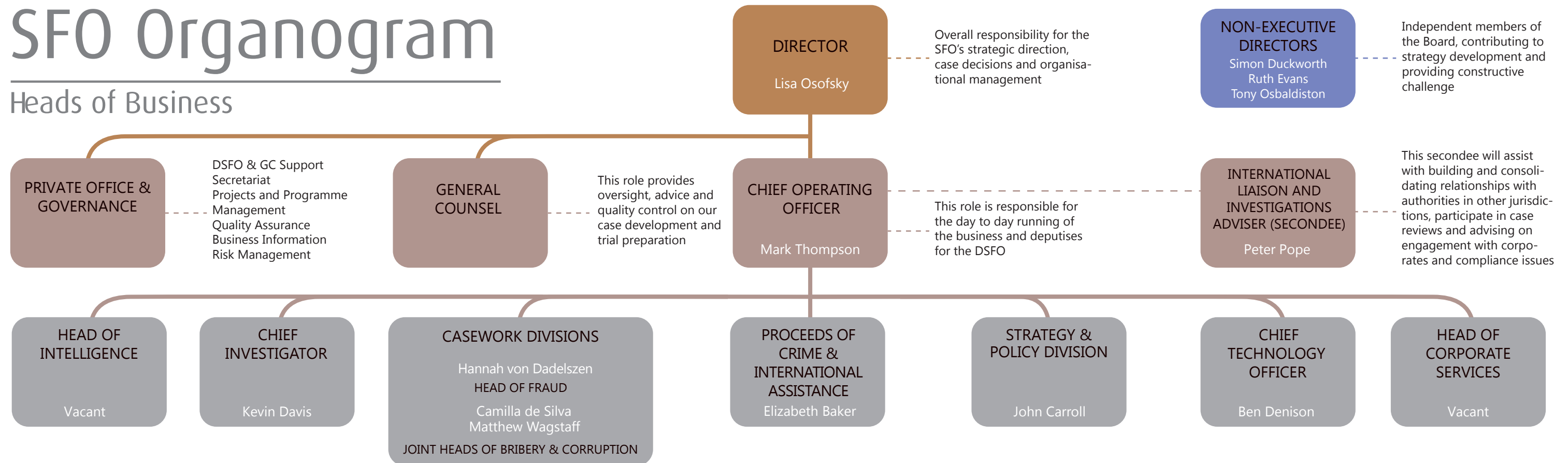


SFO Organogram

Heads of Business



INTELLIGENCE UNIT

The intelligence unit gathers and analyses information and conducts research which may lead to the Director opening a formal investigation.

ADVISER ON INVESTIGATIVE STRATEGY

HEAD OF PROFESSION FOR INVESTIGATORS

INVESTIGATOR TRAINEE PROGRAM

PROFESSIONAL STANDARDS

DEPARTMENTAL SECURITY UNIT

INVESTIGATION AND PROSECUTION

If the Director of the SFO believes that there are reasonable grounds to suspect complex or serious fraud, bribery or corruption, she opens an investigation which is taken on by a multidisciplinary case team under the direction of a case controller in one of these divisions. If sufficient evidence of criminal behaviour is uncovered during the investigation and a prosecution is found to be in the public interest, charges will be brought.

This division aims to recover the proceeds of crime so that fraudsters do not benefit from their offending and victims can be compensated wherever possible.

This involves:

- seeking confiscation orders against those convicted in our cases;
- obtaining compensation orders for the victims of fraud;
- enforcing the orders obtained;
- seeking civil recovery orders in the High Court in respect of property which represents the proceeds of criminal conduct;
- investigating and prosecuting cases where money laundering is a key feature of the criminality;
- in mutual legal assistance cases, obtaining restraint orders and enforcing confiscation orders in respect of assets in the UK at the request of foreign states.

INTERNATIONAL ASSISTANCE

Nearly all SFO cases involve an international dimension and the team liaises with foreign authorities to secure cooperation. The team also handles incoming requests for assistance.

INTERNATIONAL AND LAW ENFORCEMENT LIAISON

This team develops and strengthens constructive working relationships with law enforcement partners at home and overseas. It also manages external requests for activities such as presentations, speeches, secondments, visits and conference participation.

STRATEGY, POLICY AND CROSS-WHITEHALL/CJS ENGAGEMENT

This function provides the SFO contribution to development of Government policies and strategies and external reviews, including criminal justice policy, serious organised crime and anti-corruption strategies and preparations for exiting the EU. It also coordinates compliance with new legislative and procedural requirements ensuring the SFO is following best practice.

TRAINING

RESEARCH AND LIBRARY SERVICES

COMMUNICATIONS, PARLIAMENTARY, CORRESPONDENCE AND FOI

WITNESS CARE

IT SYSTEMS

DIGITAL REVIEW SYSTEMS

KNOWLEDGE AND INFORMATION MANAGEMENT

EVIDENCE HANDLING

GRAPHICS, ELECTRONIC PRESENTATION OF EVIDENCE & REPROGRAPHICS

DIGITAL FORENSICS UNIT

FINANCE

CONTRACTS AND PROCUREMENT

FACILITIES MANAGEMENT

HUMAN RESOURCES